

Investing in Patient Care :: Employee and Philanthropist Double the Impact :: Our Impact in the Community

Gratitude

I am so proud
of what we
do here!



**St. Mary Medical Center
Foundation**

A Dignity Health Member

Spring 2023



Message from the Hospital President & CEO

As we welcome a new year, I can't help but feel immense gratitude for our hospital heroes who continue to heal and recover from the pandemic and the emotional stress that was placed upon them. Our number one priority is to safely care for those in our communities who come to us for their health care needs. While we are committed to our mission of service and caring for this community, St. Mary remains focused on our key growth initiatives and expanding our services.

I am hopeful that as we turn the corner on this pandemic, our road to recovery will be a successful one. In staying focused on our mission and providing exceptional care, we look ahead to bring the newest in medical technology to enhance the excellent care we provide to patients.

St. Mary has received numerous accolades for outstanding care recently, including Healthgrades recognition as a recipient of the 2023 Critical Care Excellence Award™, which ranks us among the top 10% of hospitals in the nation for critical care services. Additionally, we remain a Certified Comprehensive Stroke Center and received the Gold Plus award from the American Heart/Stroke Association.

The power of philanthropy to make a real and lasting impact is highlighted in the stories you'll read in this issue, including a spotlight on the hospitalist program led by Dr. Babak Gachpaz, the CARE Center migration project and the impact of our community benefit.

There is so much to be grateful for at our hospital and we look forward to celebrating our 100 year anniversary in the coming months. Thank you to all of our donors, you help make our vision of providing the best patient care a reality each and every day. We could not do this work without you.

With gratitude,

A handwritten signature in black ink that reads "Carolyn Caldwell". The signature is fluid and cursive, written in a professional style.

Carolyn Caldwell, FACHE

Hospital President & CEO

Dignity Health - St. Mary Medical Center



Message from the Foundation Chair

As Chairman of the Foundation Board of Trustees, it is my honor to share with you, the greater Long Beach community the latest developments at St. Mary Medical Center. Our physicians, nurses and staff of 1,400 employees help St. Mary live its values of compassion, inclusion, integrity, excellence and collaboration for nearly 100 years.

St. Mary Foundation helps play a vital role in providing over \$4 million annually to the Medical Center in equipment and programmatic support to advance the level of care. This includes, but is not limited to, the CARE Center Migration Project, which will help bring the CARE Center, our comprehensive center for those impacted with HIV under one roof. Thanks to generous support St. Mary brings a unique blend of state-of-the-art technology and quality care while advancing social justice for all.

On behalf of St. Mary Medical Center Foundation, St. Mary Medical Center staff and the Foundation Board of Trustees, thank you for entrusting us with your most valuable assets – your loved ones.

In grateful service,

Timothy Aldrete
Tim Aldrete

Tim Aldrete
Chair
Foundation Board of Trustees

Inside

Philanthropy

Sharon McNealy shares her inspiration for her philanthropy

P 5

Investing in Patient Care

Implementation of a hospitalist program has helped improve patient experience and patient satisfaction

P 7

A New Model of CARE for the Unhoused

St. Mary Medical Center serves as pilot hospital for identifying and connecting those who are unhoused with support from Healthcare in Action

P 9

Guardian Angel

Learn more about how to honor a caregiver or hospital staff member for their service.

P 10

Our Impact in the Community

St. Mary plays a key role in identifying and addressing health disparities to help those who are most vulnerable.

P 11

Holiday Party

Highlights from the 2022 Holiday Party honoring Dr. Robert Lugliani, Long Beach Police and Long Beach Fire departments.

P 16

Decades of Dedication

Paying tribute to St. Mary employees who have demonstrated their commitment to our ministry.

P 17



News and Notes

Annual Charity Golf Classic benefits Comprehensive Stroke Center

Last summer, the St. Mary Medical Center Foundation presented its 29th Annual Charity Golf Classic. A warm thank you to everyone who attended and helped make our fundraising event a success! Altogether, close to \$150,000 was raised for Dignity Health - St. Mary Medical Center's Comprehensive Stroke Center.



Left to Right: Staff Member Jennifer Bourgeois, Celines Luna, LA County Sheriff Robert Luna, Golf Tournament Co-Chair Tim Aldrete.



Left to Right: Lindsay Mais, Winner of Women's Longest Drive and Steve Dunn, Tournament Co-Chair.



Left to Right: South Coast Plaza Certificate Winner Randy Gordon and Jennifer Bourgeois.

Ribbon Cutting Ceremony for "Spark at Midtown"

St. Mary Medical Center is honored to be part of Long Beach's latest affordable housing project called "Spark at Midtown." Thanks to collaboration with LINC Housing Corporation, 95 families now have a safe and comfortable home with access to an on-site YMCA and a St Mary Medical Center clinic to manage their health and wellness. Our Hospital President, Carolyn Caldwell, was on-hand to share a few words of hope and gratitude with those present at the grand opening event.



CARE Center Migration project

The CARE Center at Dignity Health – St. Mary Medical Center was founded at the rise of the AIDS crisis in 1986. Since its inception, CARE has expanded to provide support for over 2,000 clients with over 17 services bearing need for a central location for the CARE Center to call "home". This year, the CARE Center at Dignity Health – St. Mary Medical Center will begin phase 1 of its migration process to the 1040 Elm building on campus and bring all of its services under one roof – medical clinic, social services, dental clinic and program office. Centralizing all of CARE's services will not increase continuity of care for clients but will also provide future room for the CARE Center to grow as it expands its footprint to over 21,611 square feet.

St. Mary Medical Center poised to celebrate 100 years of healing ministry in 2023

In anticipation of the centennial year – a tagline has been developed by one of St. Mary's employee, Alexander Ortega. The celebration of the centennial will take place from March 2023 - March 2024. A variety of celebrations will take place as an opportunity to say thank you to the community for their support of our ministry.

Centennial Tagline:
**Your Health –
 Our Mission
 100 Years**



Welcoming Our Newest Foundation Trustees

St. Mary Medical Center Foundation is proud to welcome eight new Trustees to the Foundation Board this year: Dr. Tiffany Brown, Dr. Azadeh Farin, Jennifer Lumsdaine, Celines Luna, Jack Nemeth, Michelle Pagtakhan, Christopher Pook, Dr. Lourdes Ramos-Rivas.

Dr. Tiffany Brown serves as the Assistant Superintendent of School Support Services, which combines the work of the Offices of Special Education and Student Support Services. While Dr. Brown holds great value in the education of all students, she has had particular career focus on providing advocacy and a voice for underserved populations.

Dr. Azadeh Farin, FAANS, FACS, is a fellowship-trained and board-certified neurosurgeon with experience in a wide range of neurosurgical procedures. Dr. Farin is proud to be among only 200 female neurosurgeons in the United States.

Jennifer Lumsdaine is a partner at TLD Law, LLP. Her practice focuses on assisting fiduciaries and businesses both in litigation and in formulating best practices to prevent litigation.

Celines Luna recently retired from the Federal Bureau of Investigations after 26 years of service as an Intelligence Analyst. Celines Luna and her husband LA County Sheriff Robert Luna both serve on boards of St. Mary Medical Center.

Michelle Pagtakhan works as the Manager of the Broadland Hotel and is the Founder and the Executive Director of the You Run this Town Foundation – an organization which provides enrichment programs to underserved youth, work-study internships, scholarships, and community partner engagement programs.

Christopher R. Pook, who was born in England, is generally regarded as one of the most innovative motor sports executives in North America. He is responsible for the creation of the annual Grand Prix of Long Beach, now in its 47th year; he has 'created' temporary circuit racing venues in Las Vegas, Dallas, Meadowlands, Denver, Del Mar and St. Petersburg.

Jack Nemeth has been active in the Long Beach community as a real estate broker and investor and Trustee of a few estates. Jack is currently working with the LGBTQ Center of Long Beach to help administer a trust in which they are beneficiary and has helped with fundraising in the past for a few organizations in Orange county.

Dr. Lourdes I. Ramos-Rivas, is the President and CEO of the Museum of Latin American Art (MOLAA) in Long Beach, California. Having an extensive international trajectory directing museums, developing exhibitions and cultural projects of innovation, she is the first Latin American woman to serve as a member of the Accreditation Commission of the American Alliance of Museums (AAM).



Dr. Tiffany Brown



Dr. Azadeh Farin



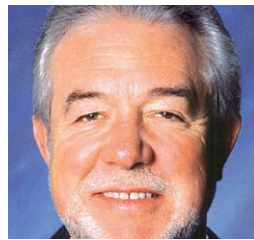
Jennifer Lumsdaine



Celines Luna



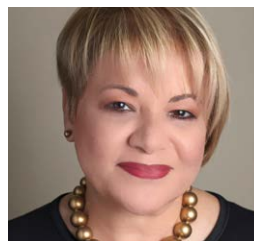
Michelle Pagtakhan



Christopher R. Pook



Jack Nemeth



Dr. Lourdes I. Ramos-Rivas

St. Mary Medical Center Foundation Board of Trustees

Tim Aldrete, Chair
Lindsay Mais, Vice Chair
David R. Haberbush, Esq., Treasurer
Dr. Sara Pol-Lim, Secretary

John S. Arens III
Chantal Bourgeois-McBride
Dr. Tiffany Brown
Carolyn Caldwell, FACHE
Paul J. Carter
Minnie Douglas, Ed.D., R.N.
Azadeh Farin, MD
Honorable Chistopher J. Frisco
Babak Gachpaz, MD
Marianne Gastelum
Vanessa Haberbush, Esq.
Lillian Lew
Elizabeth H. Lucas
Jennifer Lumsdaine
Celines Luna
Michael J. Neils, M.Div., S.T.M.
Jack Nemeth
Michelle Pagtakhan
Victor Parker
Robin D. Perry, Esq.
Christopher Pook
Wilma Powell
Dr. Lourdes Ramos-Rivas
Gina S. Smith
Dr. Mike Walter
Wled Wazni, MD

Donor and Employee: Double the Impact

When Sharon McNealy first started work at St. Mary Medical Center, “Star Wars” was making its debut in cinemas, the television series “Roots” became a national obsession, and Elvis Presley died at the age of 42. The year was 1977, and Sharon had no way of knowing at the time that St. Mary would become her second home.

“I started at the lowest level in Finance, as an Accounting Clerk,” she says. Forty-five years later, she has been promoted to Chief Financial Officer (CFO), the top position in St. Mary’s financial services department. She earned that title the old-fashioned way, working her way up as a Payroll Clerk, Accounting Supervisor, Director of Finance, Controller and finally CFO. And through all those years, she has been one of St. Mary’s most consistent donors. Why does she donate to her place of employment?

“I was raised Catholic, so I believe in giving back,” she notes. “I care about my community, and the people who work here at St. Mary are like family to me.” McNealy has two causes that are close to her heart: the CARE Center and the Diabetes program. Through the decades, she has designated her regular donations to help fund those two programs.

“Everyone in my family has been affected by diabetes,” she states. “My mom, aunt and sister have all been treated here. We all struggle with it.” One of McNealy’s most heartwarming experiences was when St. Mary’s renamed its diabetes program in her mother’s honor. Today, the Juanita McNealy Diabetes Program is open to all who need it, providing education on Diabetes management; which is often not covered by health insurance.

“I am so proud of what we do here, and the CARE Center is like no other program,” she says. The CARE Center helps any patient concerned with preventing or managing HIV to live life as symptom-free as possible. “I can see how giving has helped this program become what it is today,” she asserts. “You can see the impact!”

She may be one of the longest-tenured employees at St. Mary’s, but also one of its most dedicated. She attributes the deep relationships with her colleagues she has formed over the years as the reason she stays and supports the St. Mary Foundation. “We are a family-oriented facility, and the quality of care is fantastic,” she declares. “I knew that they would take my money and do great things with it, and they have!”



“I care about my community, and the people who work here at St. Mary are like family to me.” Sharon McNealy, Chief Financial Officer, St. Mary Medical Center





Investing in Patient Care

St. Mary Medical Center strives to stay at the forefront of cutting-edge medicine by offering the latest specialized services as they are proven to advance high quality patient care. Such is the case with St. Mary's hospitalist program, which was initiated at the medical center in September 2019.

"Hospitalists specialize in managing the care of patients who are in the hospital," says Babak Gachpaz, MD, Medical Director of the Hospitalist program. "We order tests and procedures, monitor each patient's status, adjust medications, evaluate the effectiveness of therapeutic treatments, and basically follow patients during their entire

stay until discharge." Hospitalists do their work entirely within the confines of the hospital and get to know the capabilities of every department, and the services they offer. They staff the hospital around the clock and in the evenings, they are often the only physicians onsite, with the exception of Emergency Department doctors, making them a valuable resource for the nursing staff.

"Many primary care physicians do not feel comfortable managing the care of patients in the hospital, or they may not be on staff here," explains Dr. Gachpaz. "For others, it is difficult to put in a full day of seeing patients in the office and then have to round on patients after hours."



Left to Right: Drs. Iris Partovi, Rasam Hosseinian, Babak Gachpaz, Wisam Khader, Christina Arcuri, Ravi Solanki, Rajveer Joes

For these reasons and more, primary care physicians wholeheartedly support the hospitalists program at St. Mary. “They also recognize the benefits of a consistent continuum of care,” Dr. Gachpaz adds.

St. Mary’s also has residents who are aspiring to become hospitalists when their training ends.

“Having hospitalists in-house improves communication

Hospitalist follow patients care during their entire stay.

As a specialty, hospitalists are relatively new and were not organized as such until the mid 1990s. When St. Mary’s hospitalist program opened it had just two physicians, Babak Gachpaz, MD and Rajveer Joes, MD. Today the program has grown to eight hospitalists with plans to add more as the demand grows. As a teaching hospital,

between clinical staff, timeliness and access to care,” Dr. Gachpaz states. “That leads to better quality care.”



A New Model of Health Care for the Unhoused

For too long, homelessness has been defined solely as a housing issue, but physical and mental health issues often serve as barriers to housing. With the population of unhoused individuals in California soaring to more than 161,000, Dignity Health - St. Mary Medical Center (SMMC) is proud to partner with Molina Healthcare of California, founding sponsor of Healthcare in Action, to provide care to its members who are experiencing homelessness.

Healthcare in Action launched in January 2022 and is a new, first-of-its-kind medical group that provides health care and other services to unhoused individuals. Using a “street medicine” model, the organization works to identify members experiencing homelessness by meeting them where they are, whether it be a street corner, under a bridge, or in a hospital, emergency room, recuperative care, or skilled nursing facility. Once people in need are identified, they are offered the option to sign up for Healthcare in Action’s primary care services. To bolster these efforts, SMMC is serving as a pilot hospital for the referrals by identifying members experiencing homelessness and connecting them with Healthcare in Action.

“Without brick-and-mortar facilities, Healthcare in Action can identify and develop a relationship with people who walk through the doors of St. Mary Medical Center who are seeking care and are unhoused,” explains Carolyn Caldwell, President and CEO of SMMC. “Reaching out to this population minimizes challenges in the patient’s road back to wellness.”

Dr. Michael Hochman, CEO of Healthcare in Action, shares that the number one challenge of street medicine is consistently finding people in need. “We can increase our success rate by connecting with patients when they’re in the hospital. That’s an opportunity to catch them, identify them, develop a relationship over a few days, and then come up with a discharge plan together.”

“Reaching out to this population minimizes challenges in the patient’s road back to wellness.” Carolyn Caldwell, President and CEO, SMMC

The ultimate goal is to provide homeless individuals with the health care services they need so they can get their lives back on track. “It is an honor to work with an organization who shares our mission of improving the health of the people we serve, as we aim to advance social justice for all,” says Caldwell.





Who is your Guardian Angel?

Thank a team member who made a difference in your care!

St. Mary Medical Center is proud of our many team members who are dedicated to providing compassionate care to our patients; who know humankindness is the best medicine and practice it on a daily basis. They are our Guardian Angels.

Has a doctor, nurse, team member, or volunteer touched your life during your stay or visit? Have you experienced the power of humankindness?

You have the opportunity to say thank you by making a donation to the hospital in honor of your Guardian Angel. Each Guardian Angel will receive special recognition for their exceptional care. Your tax-deductible gift will ensure the hospital continues to fulfill its mission of serving our community.

To honor your Guardian Angel, please call us at **562.491.9225** or visit us at **www.supportstmary.org**



Annual Community Benefit Report

 **St. Mary Medical Center Foundation**
A Dignity Health Member



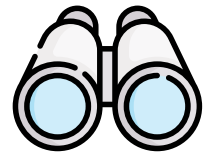
Our Impact on the Health of Our Community



Our Mission

As CommonSpirit Health, we make the healing presence of God known in our world by improving the health of the people we serve, especially those who are vulnerable, while we advance social justice for all.

Our Vision



A healthier future for all — inspired by faith, driven by innovation and powered by our humanity.

Our Service Area

16 Zip Codes



including Signal Hill, Wilmington, Carson, Paramount and San Pedro



More Than **500,000** People

Living Our Values:

The Economic Value of Community Benefit Provided in fiscal year 2022.



\$7M value

in charitable care for our Medicare patients

\$53M value

in patient financial assistance, community health programs, charitable care of Medicaid patients

CHNA Process



Community Health Needs Assessment

Every three years a Community Health Needs Assessment (CHNA) is conducted by St. Mary Medical Center and its partners to identify significant health needs. Special attention is given to the needs of vulnerable populations, unmet health needs or gaps in services and input from the community.



Findings from the CHNA are used to guide the hospital's community health improvement programs and community benefit activities, as well as its collaborative efforts with other organizations that share our mission to improve health. St. Mary Medical Center also analyzes and evaluates previous actions taken to address community health needs presented in the previous CHNA.



Your Health – Our Mission
100 Years

Partnering to Identify Communities Needs

St. Mary collaborated with the Long Beach Department of Health and Human Services, The Children’s Clinic and Memorial Care to conduct the Community Health Needs Assessment (CHNA) to form the Long Beach Community Health Needs Assessment Collaborative.



Collecting Data and Community Input to Identify Needs

- Primary data was informed by two methods – key informant interviews with community members who have fundamental understanding of the needs in St. Mary’s service area and focus groups with key individuals from the Long Beach community.
- Secondary data was collected from local, county and state sources to present community demographics, social determinants of health, health care access, birth indicators, leading causes of death, COVID-19, acute and chronic disease, health behaviors, mental health and substance abuse. Other considerations include, benchmark comparison data, and comparing community data findings with Healthy People 2030 objectives.



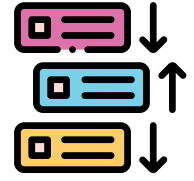
All Priority Health Needs Identified Across the Service Area

- | | | |
|-----------------------------|--------------------------------|--------------------------|
| ■ Access to Health Services | ■ Food Insecurity | ■ Preventative Practices |
| ■ Chronic Diseases | ■ Housing and homelessness | ■ Substance abuse |
| ■ COVID-19 | ■ Mental Health | ■ Violence and injury |
| ■ Economic Insecurity | ■ Overweight and Obesity | |
| ■ Education | ■ Pregnancy and birth outcomes | |

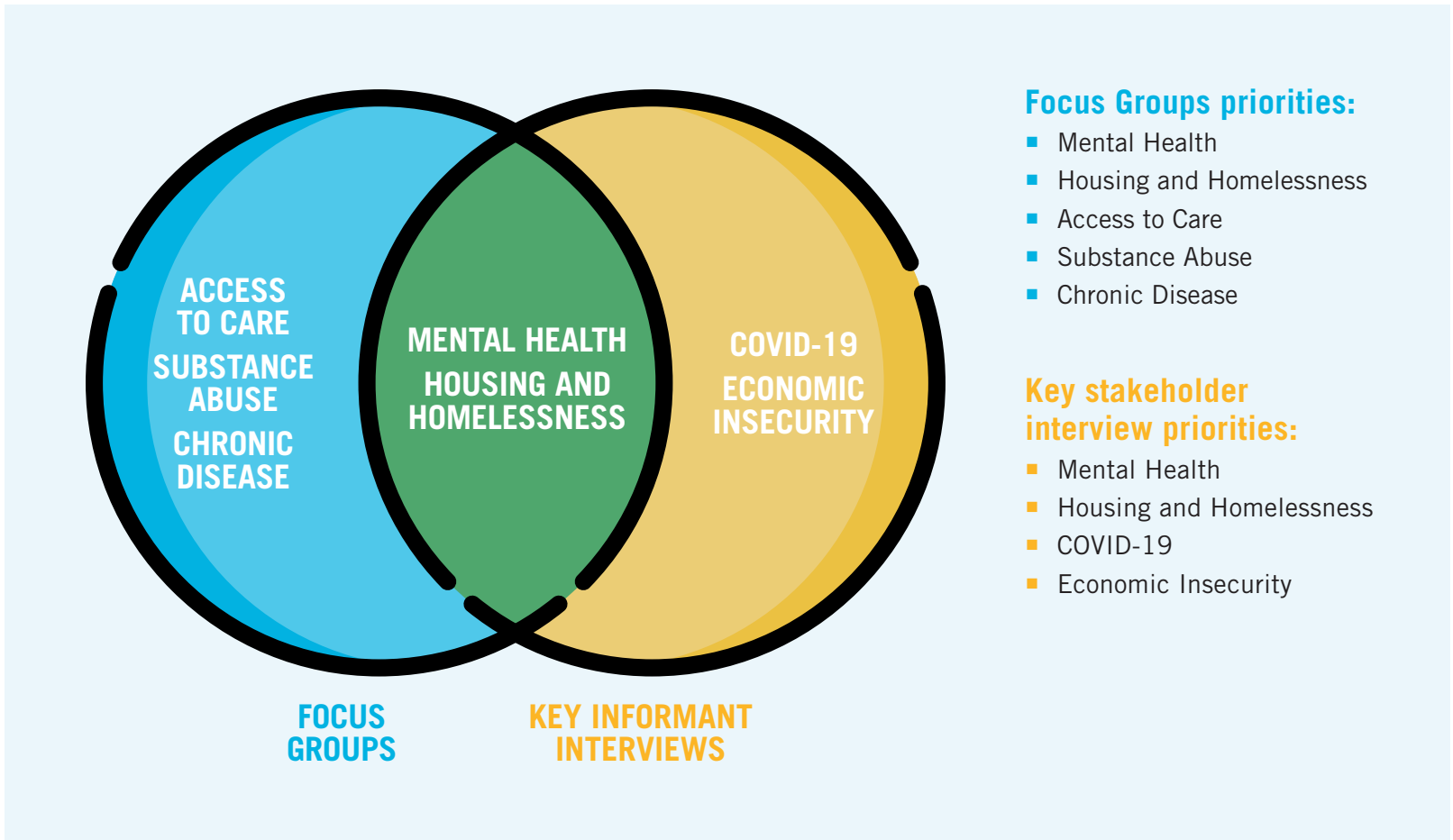
How Health Needs are Selected for Prioritization

- The Long Beach CHNA Collaborative developed an online prioritization survey to obtain feedback from key community members in the Long Beach area
- The following criteria was used to prioritize significant health needs from focus groups and key informant interviews:
 - Availability of resources to address a need
 - The perceived severity of a health or community issue as it affects the health and lives of those in the community

- Improving or worsening of an issue in the community
- The level of importance the hospital should place on addressing the issue



The Venn Diagram below shows the overlapping areas of needs that resulted across key informant interviews and focus groups.



St. Mary Medical Center's Five Areas of Focus

Taking existing community resources into consideration, St. Mary has selected to concentrate on the following five health needs which we can effectively address given our available programs and resources. Severity, Disparities, Prevention and Leverage were four criteria utilized in prioritizing health needs.



1 Access to Health Services



2 Violence and Injury Prevention



3 Housing & Homelessness



4 Mental Health



5 Preventative Practices

How St. Mary is Addressing Five Priority Needs in Our Community



1 Access to Health Services

Bazzeni Wellness Center

No-cost health education and health screenings

CARE Program

HIV medical, dental, nutrition, and psychological and social services

Community Grants Program

Offers grants to nonprofit community organizations that provide access to health services

Every Woman Counts Mammography

More than 3,000 women were screened for breast cancer including vulnerable populations

Families in Good Health

Health benefit enrollment, tobacco prevention, health education, and resources for new moms and families

Family Clinic

Primary care services for vulnerable families

Financial Assistance: Low Vision Center:

No-cost vision screenings and optical aids for vulnerable children and adults

Mary Hilton Family Clinic

Obstetrics and perinatal services for vulnerable populations

Mobile Unit

Provides pulmonary and cardiac screenings out in the community.

Collaborators: Hospital will partner with the LGBTQ

Center of Long Beach and the Long Beach

Department of Health and Human Services



2 Violence and Injury Prevention

Community Grants Program: Offers grants to nonprofit community organizations that provide mental health programs and services

Families in Good Health: Explores ways to provide community outreach and education to address violence and injury prevention

Violence and Human Trafficking Response Team

Provides education to assist providers and staff to identify patients who may be impacted by abuse, neglect, or violence, including human trafficking



3 Housing & Homelessness

Community Grants Program

Offer grants to nonprofit community organizations that provide housing and homeless programs



4 Mental Health

California Bridge Program

In collaboration with California Department of Health Care Services, St. Mary will be participating in California Bridge program. Substance Abuse Navigators will be working alongside clinicians utilizing harm-reduction methodology to identify patients in the emergency setting who would benefit from initiating medication for addiction treatment or need access to mental healthcare. Navigators would subsequently screen patients for these services, ultimately linking them with appropriate programs in the community.



CARE Program

HIV medical, dental, nutrition, and psychological and social services

Community Grants Program

Offers grants to nonprofit community organizations that provide mental health program and services

In Collaboration with UniHealth Foundation

A Licensed Clinical Social Worker is utilized to help identify signs of mental stress and trauma through adult mental health first aid programs and identify low-income and homeless individuals who are frequent users of the Emergency Department



5 Preventative Practices

Bazzeni Wellness Center

No-cost health education and health screenings

CARE Program

HIV medical, dental, nutrition, and psychological and social services

Community Grants Program

Offers grants to nonprofit community organizations that provide preventative practices

Every Woman Counts Mammography

More than 3,000 women screened annually for breast cancer including for vulnerable women

Families in Good Health

Health benefit enrollment, tobacco prevention, health education, and resources for new moms and families

Food Systems Advisory Committee

St. Mary participates in a CommonSpirit Health system wide committee to address food insecurity issues in the community including reducing barriers to accessing healthy foods

Mobile Unit

Provides pulmonary and cardiac screenings out in the community



St. Mary Provides Food Boxes

to vulnerable families in collaboration with The Salvation Army





Looking Ahead: Plans for 2023 and Beyond

How St. Mary will continue addressing health disparities in our community

Every Woman Counts (EWC)

Collaboration with Susan G. Komen Foundation to increase awareness and preventative screenings for breast and cervical cancer

Measurable Objective:

Screen 3,000+ women for breast cancer through EWC program

Mary Hilton Family Health Center

Increase access to care and in-home support and post-partum services through the Welcome Baby Program and improve pregnancy outcomes through Welcome Baby Program. Patients are referred through tours of the Labor and Delivery suites and birthing classes

Measurable Objective:

Provide initial assessments on every new patient initiating prenatal care and supplement care with nutrition, education and psychological services in order to improve pregnancy outcomes

Families in Good Health

To collaborate and partner with organizations on relevant advocacy efforts and policy changes that empower the family system and those residing in the community. Provide education, workshops and resources to the populations served by FiGH.

Anticipated Plans:

- Prepare and empower the mother before and after labor.
- Promote infant and child development
- Promote health care coverage and support individuals in navigating and utilizing preventive and treatment services.
- Provide education and resources to empower individuals in self managing their health.
- Stimulate systems changes that support healthy lifestyles through infrastructure change or policy change
- Promote the leadership capacity of youth.
- Promote positive mental and physical health practices among youth.
- Prepare youth for college and entry into the workforce

Family Clinic of Long Beach

Increase access to primary health care for our medically underserved population. Stabilize patients with diabetes and decrease disease through prevention services. Continue initiative with the Port of Long Beach utilize Propeller Health platform to monitor patients with chronic obstructive pulmonary disease (COPD) and asthma.

Measurable Objective:

- Screen patients for Diabetes and Cervical Cancer for prevention purposes
- Provide patients with diabetes medication therapy management
- Manage patient's respiratory diagnosis and other chronic diseases
- Continue to utilize Propeller Initiative to improve patients quality of life

CARE Center

Continue to collaborate with the City of Long Beach Department of Health and Human Services on Sexually Transmitted Infection (STI) screening and partner notification as well as with the LA County Department of Public Health, APLA Health, Long Beach VA, Bienestar, California State University Long Beach and The LGBTQ Center for STD Screening

Measurable Objective:

- 90% of CARE patients will be “retained in care” in Fiscal Year 2023 which is defined on standard of at least one visit in a 6 month period in a year
- 95% of CARE patients achieve and maintain complete HIV viral suppression
- Increase the number of PreP (pre-exposure prophylaxis) and PeP (post-exposure prophylaxis) visits to 1,500
- Perform 4,000 HIV tests in the Emergency Department and 300 HIV tests in the CARE walk-in clinic
- Provide 1,200 behavior health visits in-person or via telemedicine
- Distribute 2,100 allotments of food through CARE Food Pantry
- Initiate “Rapid Start” ART for 36 patients



Left to Right: Former Fire Chief Xavier Espino, Hospital President & CEO Carolyn Caldwell, FACHE and Chief of Police Wally Hebeish.

Left to Right: Foundation Trustee Chair Tim Aldrete and Dr. Robert Lugliani.

2022 Holiday Party

St. Mary presents Inaugural Spirit of St. Mary Awards at 2022 Holiday Party

St. Mary Medical Center had the honor of recognizing three outstanding individuals with its inaugural Spirit of St. Mary Award at its recent holiday party. The first two recipients were Long Beach Chief of Police, Wally Hebeish, for his department, as well as Chief Xavier Espino on behalf of the Long Beach Fire Department.

Carolyn Caldwell, SMMC President, presented the awards and stated, “The Spirit of St. Mary Award is presented to those who live humankindness - the idea that every person has the power and potential to bring healing to others. We are honored to present this new award to the heroes of the police and fire departments.”

Dr. Robert Lugliani, who retired after 56 years of service with St. Mary Medical Center, was also honored this night. Dr. Lugliani received the Spirit of St. Mary Award in gratitude for his devotion to patients, for his service to our hospital, for his generosity as a donor, for embodying the highest ideals of his calling as a physician, and for so wonderfully fulfilling our mission.

Dr. Tanya Stewart, one of Dr. Lugliani’s seven children, offered a tribute to her father as a person, a devoted father, and loving husband. Speaking for the medical staff of St. Mary Medical Center, Dr. Greg Hanley, former Chief of Staff, referred to Dr. Lugliani as a role model for younger physicians and a great teacher. Dr. Lugliani was presented the award by Tim Aldrete, Chair of the St Mary Foundation Board of Trustees.

Congratulations to our three winners! We are so incredibly blessed for these long-standing relationships.

Decades of Dedication to St. Mary Medical Center

Thank you to our St. Mary Medical Center employees who have dedicated their careers to serving our community. Below is a list of all employees who have served five years or more in our ministry. Names and years are provided by human resources.

50 or More Years of Service

David Luth
Angela Rosales

45 or More Years of Service

Victoria Kinsman
Sharon McNealy

40 or More Years of Service

Dr. Chester Choi
Cynthia Cortez
Carol Craig
Mercedes Esperanza
Gloria Hernandez
Irma King
Audrey Kinney
Vincent Payne
Maria Saito
Bonnie Underwood

35 or More Years of Service

Marilou Abadilla
Jacqueline Beard
Raymond Cano
Laura Dixon
Carol Elliott Hanna
Cathy Ferguson
Shari Glenn
Nancy Hampton
Diana Hawkins
Shauna Hermes
Rebecca Highley
Susan Hoenisch
Irma Leon
Hortencia Marta
Martha McMahon
Elena Mora
Ilabelle Orpilla
Mollicah Ouklore
Bunroeung Ray
Margarita Reyes
Joseph Salazar
Lydivic Santos
Andreina Serrano
Mary Smith
Sangita Vandermeer
Patricia Warren
Kim Whitsett

30 or More Years of Service

Sonja Arnold
Lisa Arnone

Ana Avitia
Charles Bell
Sheryl Bickel
Monica Buenrostro
Cindy Campbell
Sandra Castillo
Martha Cisneros
Antoinette Cooper
Mona Cruz
Roger Cuenca
Martin Davalos
Dennis Dimarucot
Sara Erskine
Marisol Esquivias
Elva Flores
Alejandro Flores
Elisa Francia
Irene Fukui
Gail Gardner
Patricia Germann
Maria Gomez
Kimberly Grabowski
Sarah Guevara
Lillian Herrera
Catherine Hirokawa
Ellen Jaramillo
Sheila Jennings
Johnny Keo
Chhey Kong
Deborah Larvine
Teresa Leivan
Olga Lozano
Gary Marasigan
Veronica Mathieson
Jonelle Maue-Ruggio
Ambert Moore
Thanh-Cam Nguyen
May Patam
Kimberly Pienh-Ros
James Pontigo
Luzviminda Pulido
Cynthia Radcliffe
Carolyn Reeves
Alicia Riley
Bertha Rodriguez
Margaret Ross
Norma Rubio
Rosalba Sandoval
Sara Seaton
Yvonne Sison
Eva Marie Tan
Victoria Teora
Jody Teruya
Marian Vales
Sofia Vargas
Arizelda Vazquez
Jovita Velasco

25 or More Years of Service

Joebert Villanueva
Josephine Viloria
Sandra Welke
Becky Yourex
Maria Zendejas
Juan Aguilar
John Blasco
Maria Calimquim
Cristina Canaria
Ruby Chang
Frank Covarubias
Celestino Del Rosario
Rose Domantay
Patrick Felipe
Jose Felix
Olivia Gonzalez
Carmen Guzman
Phil Herrera
David Jimenez
Peter Keo
Kathy Lemoine
Yvonne Lesser
Tracy Lundahl
Mario Mateo
Londap Meas
Jose Medina
Margaret Meehan
Arlene Mojica-Blair
Florie Munoz
Jennifer Ortega
Walter Ozawa
Jonathan Pablo
Stephanie Phillips
Jennifer Pickard
Sherrell Pickens
Bella Ramos
Sabah Rashwan
Liliana Saavedra
Edward Sanchez
Cheryl Sasse
Audrey Solis
Ingrid Umana
Siobhan Van Gieson
Enrique Vega
Mark Verrett
Ronnell Wilson-Nichols

20 or More Years of Service

Debbie Acevedo
Ramona Acosta
Jerry Afanador
Edgar Alcodia
Fatima Ali Hijara

Agnes Almodovar
Maria Alvarado
Ninarose Andersen
Carlota Anderson
Narcisa Angel
Mario Arguello
Ardel Avelino
Diana Ayala
Cristobal Badillo
Eva Baltazar
Vanessa Baltazar
Rhonda Banks-Moore
Craig Bartlett
Connie Batres
Jose Bermudez
Mendoza
Isabel Bernal
Alvaro Botello
Sherry Cabebe
Dianalyn Castisimo
Catalina Ceja
Micahel Chan
Jimmy Chao
Jeffrey Chartier
Sara Chavez
Carl Conley
John De Vaere
Ferdinand Del Rosario
Bernadette Dulay
Tiffany Edmiston
Helen Estrada
Aurora Fields
Mary Figueroa
Marie Flor
Melissa Friedman
Vosberg
Genelyn Gacula
Edvin Garcia
Ignacio Garcia
Maria Garcia Cisneros
Stephanie Glass
Maricela Gomez Pena
Rosalinda Gonzales
Maria Gonzalez
Beatriz Gutierrez
Rick Gutierrez
Adaih Gutierrez
Mauricio Gutierrez
Sara Hernandez
Jimmy Hernandez
Genoveva Holguin
Dale Hozaki
Tara James
Terrell Johnson
Audrey Junor
Pedora Keo
Hilda Lacson

Allen Lavadia
Marlene Laxamana
Paul Lovely
Max Lundahl
Sithary Oun Ly
Fariba Maghoul
Catalina Maldonado
Rommel Manarang
Susan Martinez
David Mayen
Daniel Mc Cartan
Stephanie Mckinney
Maria Medina
Josefina Melendez
Gloria Mihailescu
Akkieba Mills-Gomez
Ana Maria Mojica
Maria Moreno
Albert Moser
Senorina Murguia
Joan Murray
Kim-Khanh Nguyen
Nary Nhim
Kathleen O Malley
Laura Ordenez
Ana Orozco
William Paige
Cherlene Panganiban
Emily Parenteau
Nicole Payne
Catherine Pearce
Lauren Peiser
Phillip Penn
Veronica Perez
Elizabeth Phillips
Ricky Pouncey
Jocelyn Racela
Araceli Ramirez
Leonardo Rebullar
Sr Remi Remi
Maria Reyes
Carla Madeleine Reyes
Leonida Reynoso
Linda Richards
William Robinson
Aracely Rodas
Angelica Rodriguez
Michael Saldana
Micaela Sanchez
De Bacilio
Kathryn Sanders
Dominic Santos
Tracy Scales
Anthony Schiavoni
William Schrader
Bounmy Sisawang
Frances Soliz-Gutierrez

Lucia Tafoya
Juan Teran
Monin Thoeung
Pat Tran
Ines Trinidad
Sandra Velazquez
Michelle Venable
Rosita Venegas
Jose Violan
Lin-Lin Wang
Brian Wilson

15 or More Years of Service

Joan Abutan
Stephen Adams
Cleofe Alcontin
Gaynor Alexis
Rosalia Amezcua
Poh Ang
Rebeca Anthony
Henry Asis
Lida Avelino
Anita Badillo
Josie Bancale
Sergio Banuelos
Tammy Basile
Chatara Bass
Alberto Bermudez
Ma Divina Bernardo
Alexander Bunyi
Jemina Cadores
Merlyn Calaguas
Maria Victoria Campos
Teresita Canada
Christopher Cascone
Wendy Castillo
Elaine Chambers
Ladine Chan
Dhana Chapagain
Jamal Chavez
Faraja Comoro
Janel Cruz
Salvador De Jesus
Juvy De Leon Palma
Teresita De Raya
Brian Deshler
Kathy Dollarhide
Jeremy Epp
Mercedes Espinoza
Arlene Fadera
Kevin Failla
Byron Folgar
Floribeth Fortaleza
Lori Funaoka-Lew
Merle Galicio
Joe Garibay
Irene Gonzales
Erika Gonzalez
Gita Guragain
Victoria Guzman
Joseph Hanzlik
Mario Hernandez
Gabriel Hernandez
Christina Holguin
Denise Holland
Juliet Hontiveros
Joahanna Horario
Michael Huang
Raydene Ilagan
Jeanellis Jackson
Zoila James
Joseph Javier
Melinda Jennings
Dana Jensen
Karen Johnson
Lisa Johnson
Anjana Karki
Jennifer Kato
Hyungsook Kim
Jason Klauk
Amy Kum
Lorena Langarica
Emilyn Lao
Elvin Lapiz
Christy Laue Junod
Gricel Lawson
Marichel Lazaro
Camecia Lee
Ruby Leverett
Irina Levi
Art Lima
Freddy Llanas
Eng Long
Enrique Lopez
Hermie Lopez
Julie Lopez
Rose Lujan
Phillip Mai
Rocco Mancini
Maria Paz Asunc
Manrique
Cynthia Marquetti
Andre Melendez
Rosa Mendoza Ahedo
Maria Morales
Veronica Murillo
Corina Navarro
Cecilia Ochoa
Christina Ochoa
Aguilar
Angelica Palacios
Leticia Pena
Fhey Penuliar

Cynthia Perez	Cheryl Buckley	Alexandra Mendel	Eduardo Arce	Rigel Gutierrez Perez	Shanita Muse	Lorena Sennett
Quoc Phan	Jarmetrius Burns	Javier Mendoza	Shelise Ashley	Manuel Hakimi	Stefanie Nalupa	Leodegario Serquina
Janet Pluma	Michael Butcher	Eduardo Meza	Michele Astiazaran	Tiarra Hammond	Julia Gracia Ro	Sharareh Shahangian
Dina Poppleton-Smith	Jenny Cabral	Nicole Militello	Abraham Atiase	Jessica Hart	Namalata	Sarah Shryock
Keith Potts	Maribel Camarena	Albert Montes	Asha Badal	Lalen Has	Jonathan Navarro	Phuong Snedden
Rudy Puentes	Lisa Cary	Selena Morton	David Berkshire	Takao Hattori	Melissa Navarro	Sokunratha So
Angel Pulido	Angelica Casas	Rommel Navidad	Sandra Berruecos	Valerie Heacock	Malka Nedeljov	Silda Soma
Jewel Ramirez Zapata	Maingan Chau	Jennifer Ngo	Misti Berry	Jonathan Hehl	Annette Ngo	Irving Soto Sanchez
Dr. Neill Ramos	Touch Chhom	Christine Nguyen	Patrick Bickel	Chantha Heng	Buntek Ngov	Sarahi Soto Sanchez
Loida Rebullar	Mary Choi	Lucia Ochoa	Jeffrey Brewer	Catherine Hernandez	Jennifer Nguyen	Melita Stewart
Rosa Reyes	Tania Corzo Corado	Ellen Oliveira	Shanita Buchanan	Patricia Herrera	Vu Nguyen	Garren Stewart
Jo Yvette Reyes	Cecilia David	Lydia Ortega	Rebecca Buckley	Marcie Hilton	Nolan Nguyen	Sarah Strohecker
Irene Reyes	Veronica De La Cruz	Aaron Oshima	Charles Bull	Anh Tuyen Hoang	Thanh Lan Nguyen	Supatra
Stacey Robinson	Nisha Devankatt	Perry Palm	Samantha Burns	Christen Holguin	Tracy Nguyen	Sundharawipata
Jason Roble	Blanca Dixon	Elizabeth Papini	Juan Camargo Ruiz	Leslie Honda	Jake Nicart	Jose Tamayo Dzul
Christopher Roche	Sharon Evangelista	Kyle Peterson	Jennifer Carey	Jen Hunt	Eric Olson	Caroline Tela-Sagale
Crisalis Roche	Maila Exconde	Jennifer Phang Pope	Gloria Carter	Racy In	Anthony Onu	Ricardo Tellez
Lorena Rodriguez	Jenna Failla	Susan Photenhauer	Kristin Chalmers	Anthovie Iskarous	Jassa Onu	Georgina Terrazone
Jose Rojas	John Fairchild	Veronica Pineda	Franchesca Chan	Gary Iwakoshi	Elton Oplencia	Simret Tesfay
Cheryl Roldan	Eileen Joy Fernandez	Gonzalez	Enffie Chen	Jorge Jacinto	Guadalupe Ornelas	Lorraine Thompson
Raul Romana	Manuel	Kouthear Pong	Coty Chestnut	Trisha Jackson	Alejandra Ortiz	Diane Thompson
Daniel Saavedra	Jose Figueroa Barajas	Katrina Puig	Sophon Chetcheuth	Shelly Jenkins	Cherry Ann Pablo	Christina Tolentino-
Alekhine Sabalo	Cindy Garces	Dr. Brian Rayhanabad	Nicole Chretien	Pietro Joch	Didith Palacios	Baldrige
Mary Grace Salazar	Venecia Garcia	Joni Razalan	Maria Clave	Caren Joy Jones	Albert Pamulaklakin	Jennifer Touye
Linda Scott	Cheryl Garcia	Jacqueline Rey	Brent Conner	Jason Kiley	Alexander Pang	Dianna Trujillo
Alison Sells	Hortencia Garcia	Belita Roberts	Cristina Cordova	Hyun Kim	Dennis Panopio	Thao Truong
Eliza Shrestha	Dr.Hripsime	Stephanie Rodriguez	Rosa Crespo	Stanley Kim	Dr. Vishal Patel	Ben Tsai
Vo Phay Sin	Gharibjanyan	Allison Roque	Anna Cupp	Julianita King	Damaris Pelayo	Courdin Turalitsch
Javier Soto	Alondra Gomez	Eric Ross	Steven Dabu	Karra Kirby	Claire Pepitone	Chika Ugwu
Vanessa Stipp	Ian Green	George Ruiz	Matthew Dahms	Trace Klug	Ranella Peralta	Alexa Valdez
Donald Toombs	Edward Gruber	Lairessa Runas	Son Dam	Judy Kraemer	Kyra Perez	Kristine Valle
Suzana Torres	Christina Guardado	Ramon Salas-	Linzy Davidson	Olivia Le	Kathryn Picanco	Ricardo Varela
Andrew Tovas	Jenny Guerrero	Sarmiento	Chelsie De La Haye	Grace Lee	Aleena Pich	Richard Velasquez Jr.
Cam Tran	Veronica Guerrero	Marco Salvato	Alexandria De Leon	Dina Lee	Latasha Pierce	Ailene Ventress
Linda Trujillo	Gina Guevara-Wilder	Daniel Samarripa	Katherine De Los	Mi Young Lee	Noelia Plasencia	Robert Villa
Melissia Turpin	Juan Guirola	Samuel Sedrak	Santos	Alexandra Leon	Joel Punsalan	Steve Ward
Carlos Valderrama	Ali Hall	Sabay Sek	Kevin Deitch	Denise Livingston	Gustavo Ramirez	Kiara Washington
Maria Valenzuela	Repo Heng	Jeremy Shadrick	Marissa Delos Reyes	Vannessa Lopez	Hilda Ramirez	Nicolette Witt
De Hobbs	Mauricio Hernandez	Meghan Shea	Carmen Deoferio	Mayra Lopez Gonzalez	Efrain Ramirez	Rose Wright
Carolina Velasquez	Barbara Hewett	Monica Solorzano	Reynaldo Diego	Rebecca Lowen	Jimenez	Savinh Xavier
Wendy Wilson	Jennifer Highley	Yedid Stanton	Nhi Dinh	Veasna Mai	Ramon Rangel	Sarah Yoo
Yanlin Xiong	Cindy Ho	Dr. Sarah Strube	Monica Vashti Dizon	Leo Manicad	Godinez	Corazon Young
Sunnary Yang	Ellen Hong	Mali Teng	Susan Durston	Arnold Maningo	Randy Retama	Zaire Zelaya Lopez
Gloria Yuzon	Nancy Jimenez	Heather Teran	Shobna Dutt	Lisette Martinez	Dyan Ayesha Reynoso	Juanqi Zhu
	Tess Jose	Ponnareay Thach	Najla Emadi	Maria Martinez	Melanie Rigby	
	Marian Josen	April Torres	Rachel Enerio	Diego Martinez	Lani Paula Roble	
	Kit Katz	Esther Valdovinos	Erin Esguerra	Joshua Mas	Eric Rodriguez	
	April Kearney	Kristina Vartanian	Nathan Falangas	Andrea Mata	Ana Rodriguez	
	Aaron Keo	Maria Vazquez	Lizelle Felix	Willard Mataya	David Rodriguez	
	Esther Kim	Elizabeth Vazquez	Rogelio Flores	Erica Mateo Lopez	Richard Romero	
	Brian Kucera	Karla Villalpando	Marilou Flores	Derek Matsui	Estrada	
	Vincent Laguana	Reyna Villarreal	Mondana Foley	Laureen Mc Vicker	Michelle Rozgonyi	
	Jess Lechon	Gonzalez	Cynthia Forkland	Jennifer McClain	Julissa Ruelas	
	Mary Leilani	Claudio Villegas	Luz Fortiz	Jason Mendoza	Chelsea Rae Rufo	
	Kellie Leko	Chanh Vu	Gregory Froelich	Amira Michael	Oauline Ruiz-Guillen	
	Angie Macis	Susan Wellborn	Po Ying Fung	Kel Miller	Charlene Saddul	
	Verak Mam	Laura Wilch	Victor Gacula	Floyd Miller	Lilibeth Salapare	
	Lisa Marlia		Sayda Galdamez	Julie Mills	Beatrice Salazar	
	Adrienne Marsh		Christina Galindo	Macy Moazez	Alejandra Salgado	
	Alma Martinez		Glenda Garcia	Adrian Montero	Laura Sandoval	
	Wendy Martinez Uribe		Viviana Gomez	Tina Moore-Yamron	Mayra Sandoval	
	Keiko Maruyama		Stephanie Gomez	Nancy Morales	Johnny Santos	
	Febien Maternal		Vincent Gonzales	Itza Moreno	Ethan Sauser	
	Bonnie Mathews		Bernarda Gonzalez	Blindusa Mosteanu	Mary Ellen Scerra	
	Tammie Mccans		Maria Gonzalez	Alyx Munden	Keith Seaman	
	Kevin Melgar		Christine Gutierrez	Pedro Munoz	Carmen Sendis	

10 or More Years of Service

5 or More Years of Service



**St. Mary Medical Center
Foundation.**

A Dignity Health Member

1050 Linden Avenue
Long Beach, CA 90813
dignityhealth.org/stmarymedical

RETURN SERVICE REQUESTED

Non-Profit
U.S. Postage
PAID
Long Beach, CA
Permit No. 260

SAVE THE DATE

Monday, June 5, 2023

GOLF FORE A GOOD CAUSE

St. Mary Charity Golf Classic

Virginia Country Club, Long Beach



**St. Mary Medical Center
Foundation**

A Dignity Health Member